



A **GREAT** PLACE TO CALL **HOME**

## WELCOME!

The Woodlands of Arlington Apartments is **the most desired and affordable** community at the heart of Arlington, Texas. Enclosed by I-20, I-30, HWY 820, and HWY 360, it grants **quick access** to the cities of Irving, Grand Prairie, Fort Worth, Grapevine, and Dallas as well as a myriad of fine dining, shopping, nightlife and family entertainment, and top rated schools.

This **stunning lifestyle** hosts a pet-friendly community with large inviting homes, high-end amenities and renovated apartment features\* that is **just 5 minutes** away from UTA and so much more!

Once you take a tour and meet our **professional and friendly staff**, you will be ready to **call** The Woodlands of Arlington your **home**.

## COMMUNITY AMENITIES

- 30 minutes away from DFW International Airport
- 24-Hour emergency maintenance
- All new LED building lights
- Ample parking for residents and visitors
- Business center
- Lighted covered parking spaces
- Top rated Arlington School District
- On-site laundry facilities
- On-site dog park
- On-site staff
- Picnic areas with outdoor grills
- Plush Landscaping
- Resort-style swimming pools
- Sports court

## APARTMENT FEATURES

- 2-inch mini blinds and LED recessed lighting
- All-electric kitchen appliances
- Dishwashers
- Energy efficient solar screen on windows
- Entry-way and linen closets\*
- Fire stoppers
- Garbage disposals
- Kitchen accents with modern backsplash
- Modern ceiling fans and tiled bathrooms
- Pass-through bars
- Patios/balconies
- Spacious walk-in closets
- Upgrade flooring /carpeting
- Washer and dryer connections\*
- Wood-burning fireplaces\*

ALL SQUARE FOOTAGE IS APPROXIMATE AND IS SUBJECT TO CHANGE. APARTMENT FEATURES MAY VARY BY UNIT. \*ONLY IN SELECT UNITS



**DIRECTIONS:** FROM I-30 TAKE THE **FIELDER RD.** EXIT TOWARDS **S. FIELDER RD.** AND TURN RIGHT ON **W. ABRAMS ST.** THEN TURN LEFT ONTO **S. BOWEN RD.** AND A RIGHT ON **LYNNWOOD DR.** WE ARE ON THE LEFT.

2800 Lynnwood Drive  
Arlington, TX 76013  
TEL (817) 461-8271  
FAX (817) 275-2278

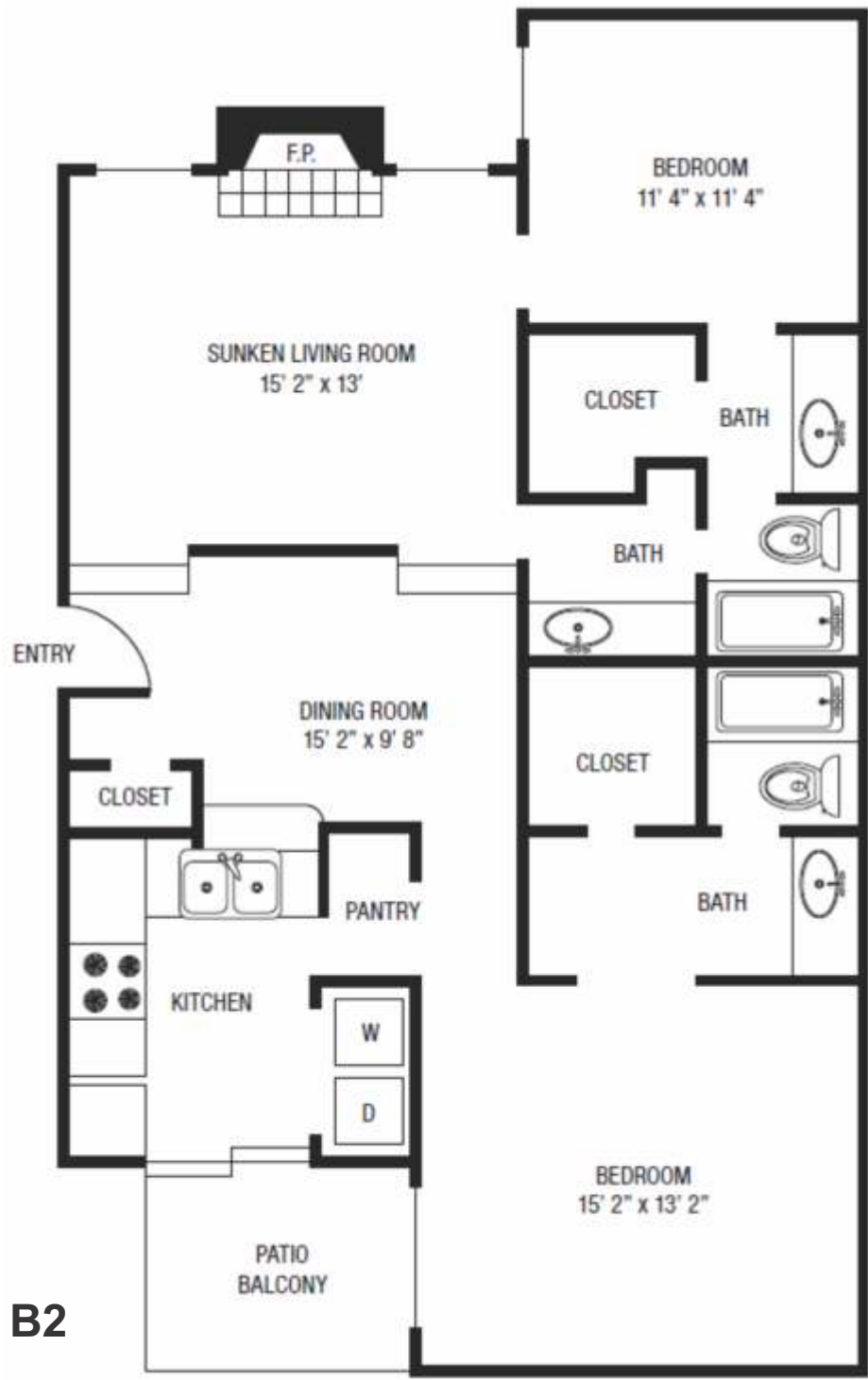
E [info.woodlandsofaringtonapartments@wmdl.biz](mailto:info.woodlandsofaringtonapartments@wmdl.biz)

[WWW.THEWOODLANDSARLINGTON.COM](http://WWW.THEWOODLANDSARLINGTON.COM)



WOODLANDS  
OF ARLINGTON  
APARTMENTS





## Woodlands of Arlington B2

Two Bedroom, Two Bath  
1,181 Square Feet\*

2800 Lynnwood Drive, Arlington TX 76013 (817) 461-8271

\*All square footage is approximate only