



WOODLANDS
OF ARLINGTON
APARTMENTS



817.461.8271



2800 Lynnwood Drive
Arlington, TX 76013



thewoodlandsarlington.com



817.275.2278 FAX



WE'VE GOT

A GREAT Place To Call HOME

The Woodlands of Arlington Apartments is the most desired and affordable community in the heart of Arlington, Texas; home of the Dallas Cowboys and Texas Rangers. Bordered by I-20, I-30, Hwy 820, Hwy 360 and Toll Roads, it grants quick access to the cities of Irving, Grand Prairie, Fort Worth, Grapevine, and downtown Dallas. Within walking distance, you can enjoy the convenience of grocery shopping, financial institutions and fine dining. We are only a block away from top rated schools!

Our professionally trained staff is eager to meet your expectations with extraordinary service and care.

Contact us today for more information!

INTERIORS

- All-Electric Kitchen Appliances
- Modern Ceiling Fans
- Dishwashers
- Entry-Way and Linen Closets*
- Fire Stoppers
- Garbage Disposal
- Pass-Through Bars in all of our Floor Plans
- Patios/Balconies*
- Spacious Walk-In Closets
- Washer and Dryer Connections*
- Wood-Burning Fireplaces*
- 2" Blinds
- Energy Efficient Solar Screens on all Windows
- LED Recessed Lighting
- Modern Tiled Bathrooms
- Kitchen Accents with Modern Back Splash
- Brush Nickel Hardware and Upgrade Flooring and Carpeting
- New Energy Efficient Front Doors
- Pet Friendly Community**



DIRECTIONS:

From I-30 take the Fielder Rd. Exit Towards S. Fielder Rd. and turn right on W. Abrams St. then turn left onto S. Bowen Rd. and a right on Lynnwood Dr. we are on the left.

COMMUNITY AMENITIES

- 24- Hour Emergency Maintenance
- Arlington School District
- 2 On-Site Laundry Facilities
- On-Site Dog Park
- Business Center
- Picnic Areas with Outdoor Grills
- 2 Resort-Style Swimming Pools
- Sport Court
- Lots of Parking on Property
- Plush Landscaping
- On-Site Staff
- All New LED Building Lights
- Ample On-Site Parking

*Available in select homes

**Restrictions May Apply



E Mail: wdleasing@wmci.biz

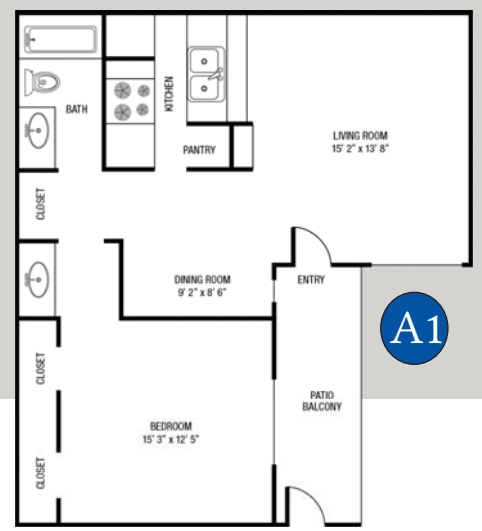
2800 Lynnwood Drive
Arlington, TX 76013

817.461.8271

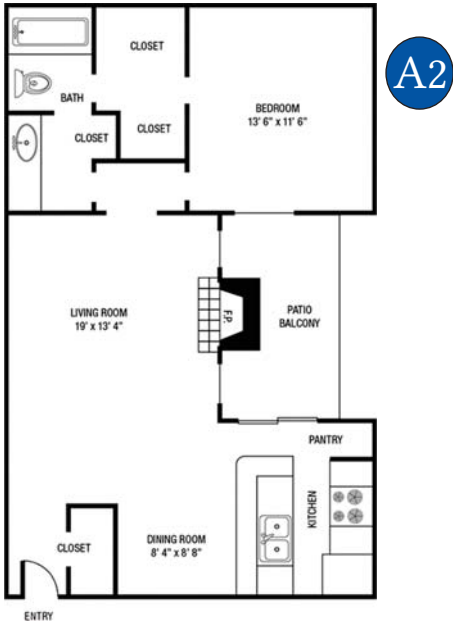
*All dimensions and measurements are approximate.



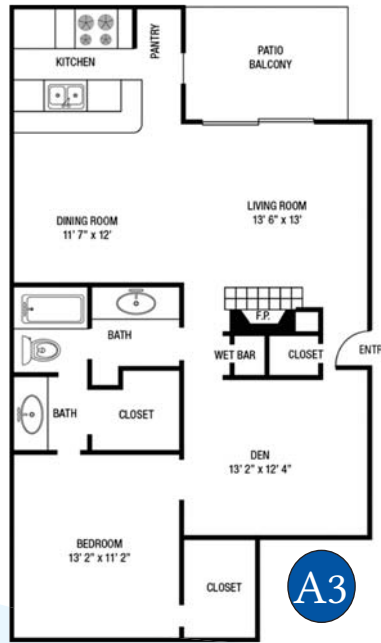
Efficiency 530 Sq. Ft.*



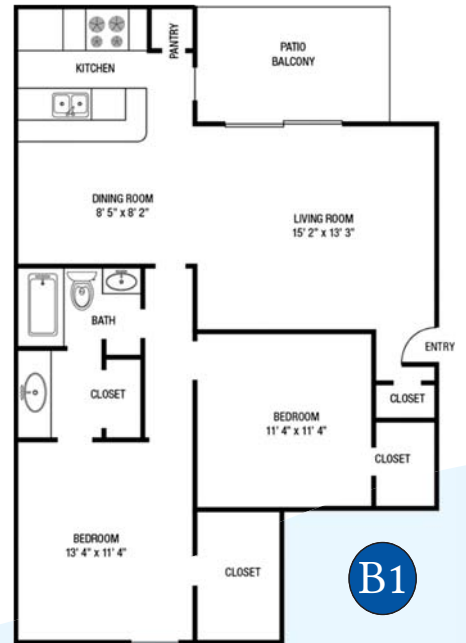
1 Bed / 1 Bath 699 Sq. Ft.*



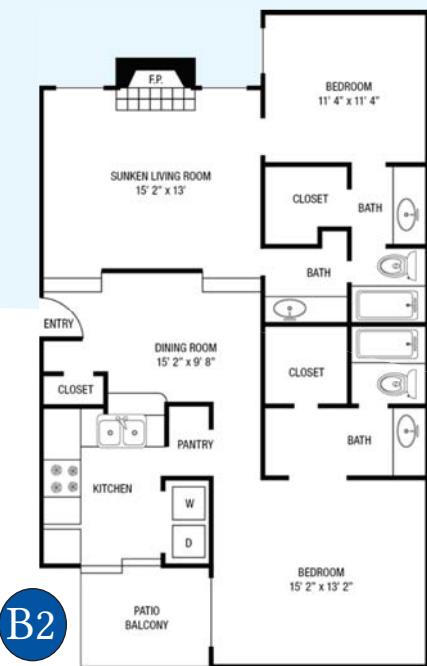
1 Bed / 1 Bath 810 Sq. Ft.*



1 Bed / 1 Bath 1,017 Sq. Ft.*



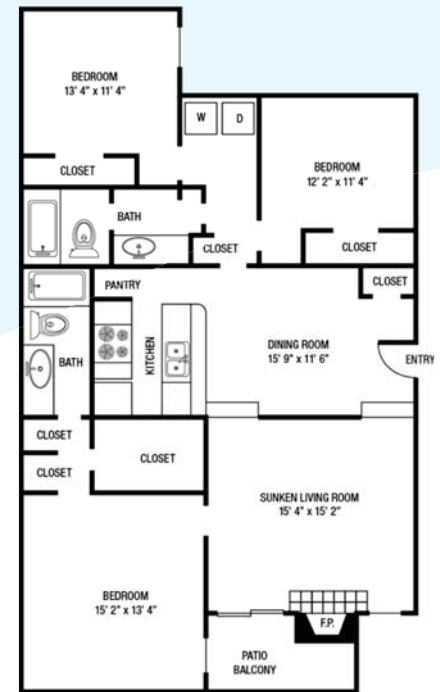
2 Bed / 1 Bath 961 Sq. Ft.*



2 Bed / 2 Bath 1,181 Sq. Ft.*



2 Bed / 2.5 Bath 1,262 Sq. Ft.*



3 Bed / 2 Bath 1,356 Sq. Ft.*